



State of Washington  
DEPARTMENT OF FISH AND WILDLIFE

South Central Region • Region 3 • 1701 South 24<sup>th</sup> Avenue, Yakima, WA 98902-5720  
Telephone: (509) 575-2740 • Fax: (509) 575-2474

June 3, 2022

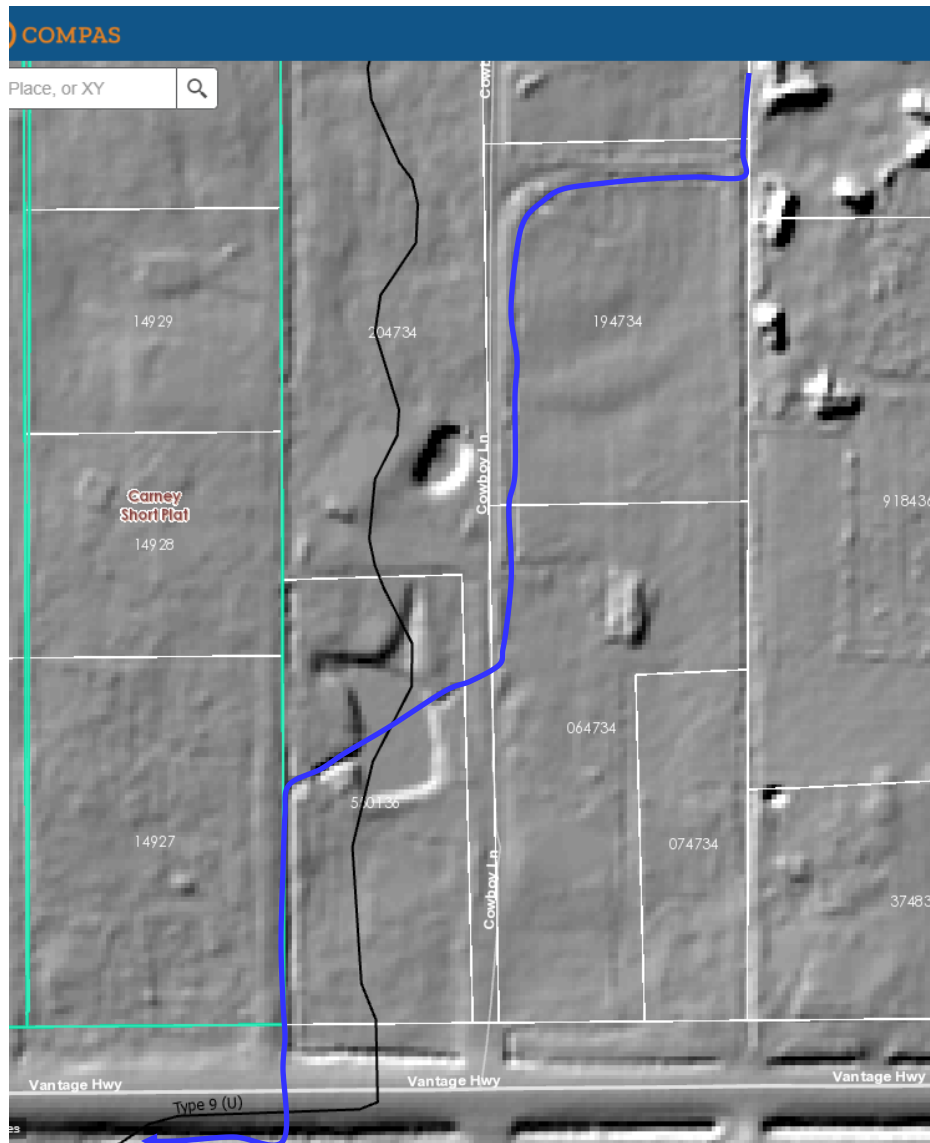
Jeremiah Cromie  
Community Development Services  
Kittitas County  
411 N. Ruby Street, Suite 2  
Ellensburg, WA 98926

**SUBJECT: WDFW COMMENTS ON CU-22-00002 CALVARY ELLENSBURG**

Dear Mr. Cromie,

Thank you for the opportunity to comment on the proposed Calvary Ellensburg project near East Branch Lyle Creek. East Branch Lyle Creek is a branch of Lyle Creek starting along Judge Ronald Road. It flows south and continues west along the northern portion of Calvary Ellensburg's property before heading south and crossing Cowboy Lane to the west and eventually crossing Vantage Highway before rejoining the main branch of Lyle Creek near the Palouse to Cascades Trail. The stream layer on COMPAS does not accurately reflect the location of this channel, but the approximate location is easier to see in LIDAR and in Figure 1 below.

The Washington Department of Fish and Wildlife (WDFW) acknowledges that East Branch Lyle Creek may be managed for irrigation deliveries, but it is currently unscreened at Judge Ronald Road where the upstream extent of East Branch Lyle diverts from the main branch of Lyle Creek and it flows perennially. As such, WDFW recommends East Branch Lyle Creek be treated as a fish bearing stream with appropriate setbacks or that a fish screen meeting WDFW criteria to prevent fish entrainment into this channel be designed and constructed such that fish are no longer entrained into East Branch Lyle Creek. WDFW will be pleased to work with the project proponents to evaluate options and help accomplish their goals for their property.



**Figure 1.** The blue line generally traces the path of East Branch Lyle Creek flowing into and off Calvary Ellensburg properties.

Thank you again for the opportunity to comment and please let me know if there are any questions or comments we can answer. Please reach out to Jennifer Nelson at (509) 961-6639 or [Jennifer.nelson@dfw.wa.gov](mailto:Jennifer.nelson@dfw.wa.gov).

Sincerely,

Jennifer Nelson  
Fish and Wildlife Biologist